

**FAM**

FATTO A MANO  
211

**COLLECTION**

**LANG**

Y A R N S

2015.0001

[www.langyarns.com](http://www.langyarns.com)



























































































































**30 merino 400 lace**

**31 kim**













































































































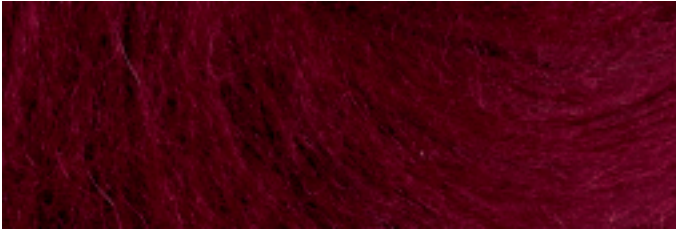
## SILKMERINO

58% Schurwolle (Merino fine), 38% Seide, 4% Polyester, ca. 150m/50g, NN 4½ - 5  
58% new wool (merino fine), 38% silk, 4% polyester, ca. 150m/50g, NN 4½ - 5 (US 7 - 8)



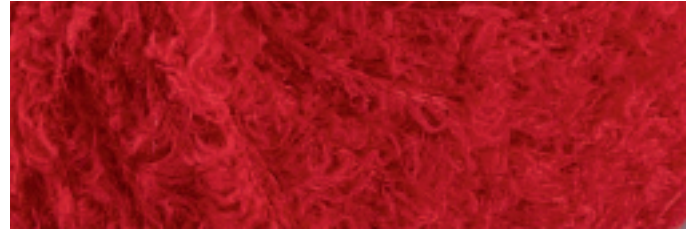
## SOPHIA

87% Alpaka (superfine), 13% Schurwolle, ca. 50m/100g, NN 9 - 10  
87% alpaca (super fine), 13% new wool, ca. 50m/100g, NN 9 - 10 (US 13 - 15)



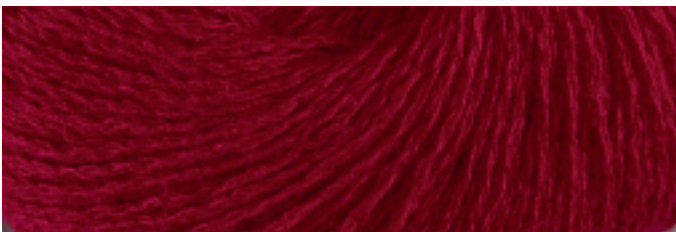
## MALOU LIGHT

72% Baby Alpaka 16% Polyamid, 12% Wolle, ca. 190m/50g, NN 4½ - 5  
72% baby alpaca 16% nylon, 12% wool, ca. 190m/50g, NN 4½ - 5 (US 7 - 8)



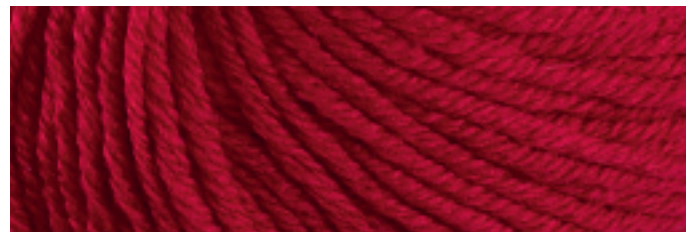
## DOUDOU

100% Polyamid, ca. 155m/50g, NN 3½ - 4  
100% nylon, ca. 155m/50g, NN 3½ - 4 (US 4 - 6)



## CASHMERE LACE

100% Kaschmir, ca. 165m/25g, NN 3 - 3½  
100% cashmere, ca. 165m/25g, NN 3 - 3½ (US 3 - 4)



## ALBERTA

40% Wolle (Merino extrafine), 30% Viskose, 20% Polyamid, 10% Kaschmir, ca. 90m/50g, NN 4½ - 5  
40% wool (merino extrafine), 30% viscose, 20% nylon, 10% cashmere, ca. 90m/50g, NN 4½ - 5 (US 7 - 8)



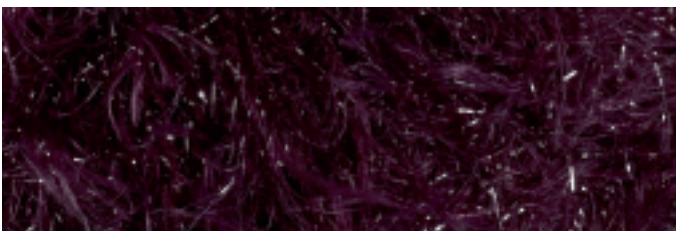
## MINERVA

90% Schurwolle (Merino fine) superwash, 10% Polyamid, ca. 85m/50g, NN 5½ - 6  
90% new wool (merino fine) superwash, 10% nylon, ca. 85m/50g, NN 5½ - 6 (US 9 - 10)



## ELENA

50 % Schurwolle, 50 % Polyacryl, ca. 60m/100g, NN 9 - 10  
50 % new wool, 50 % polyacrylic, ca. 60m/100g, NN 9 - 10 (US 13 - 15)



## ASTORIA

80% Polyamid, 20% Schurwolle, ca. 70m/50g, NN 5  
80% nylon, 20% new wool, ca. 70m/50g, NN 5 (US 8)



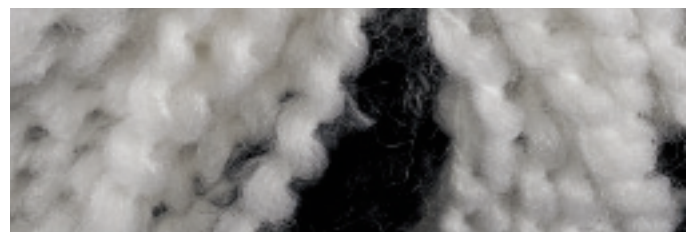
## SPRAY

100% Schurwolle filzfrei, ca. 50m/50g, NN 8 - 9  
100% new wool (pill free), ca. 50m/50g, NN 8 - 9 (US 11 - 13)



## BROOKLYN

47% Wolle, 47% Polyacryl, 6% Polyamid, ca. 47m/100g, NN 10 - 12  
47% wool, 47% polyacrylic, 6% nylon, ca. 47m/100g, NN 10 - 12 (US 15 - 17)



## MANHATTAN

53% Schurwolle, 47% Polyacryl, ca. 90m/100g, NN 10 - 12  
53% new wool, 47% polyacrylic, ca. 90m/100g, NN 10 - 12 (US 15 - 17)



**LANG**  
Y A R N S

