

# FAM

FATTO A MANO  
226

ACCESSOIRES  
HOME



---

# LANG

Y A R N S

2030.0001

[www.langyarns.com](http://www.langyarns.com)























**10 cashmere lace**



**11 merino 70**



**12 alpaca superlight / merino+ / millecolori socks & lace**

**13 novena color**

**14 donegal**















LANG  
YARN S











**23 virginia**



**24 cashmere classic**























**LANG**  
Y A R N S

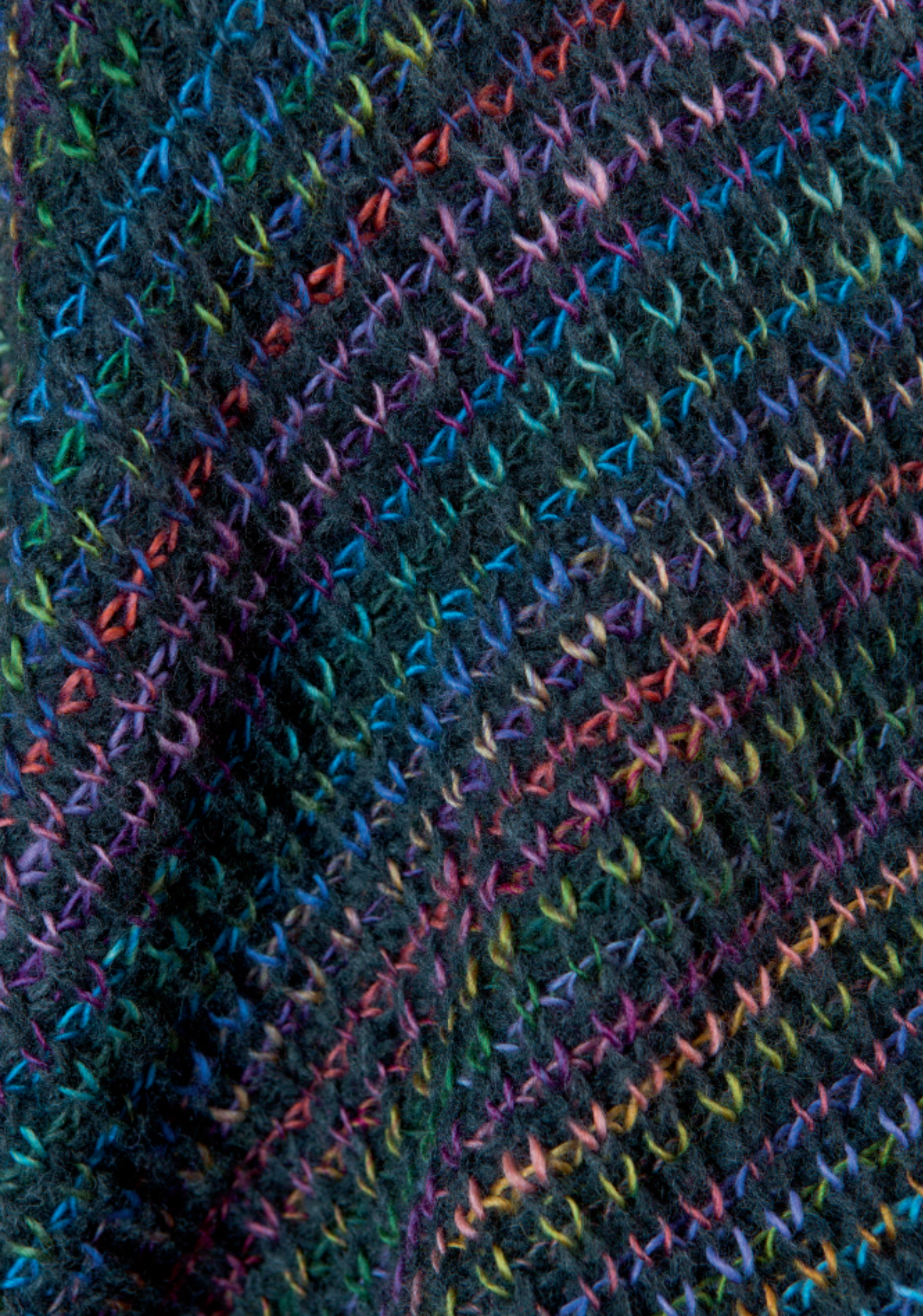


**LANG**  
Y A R N S



























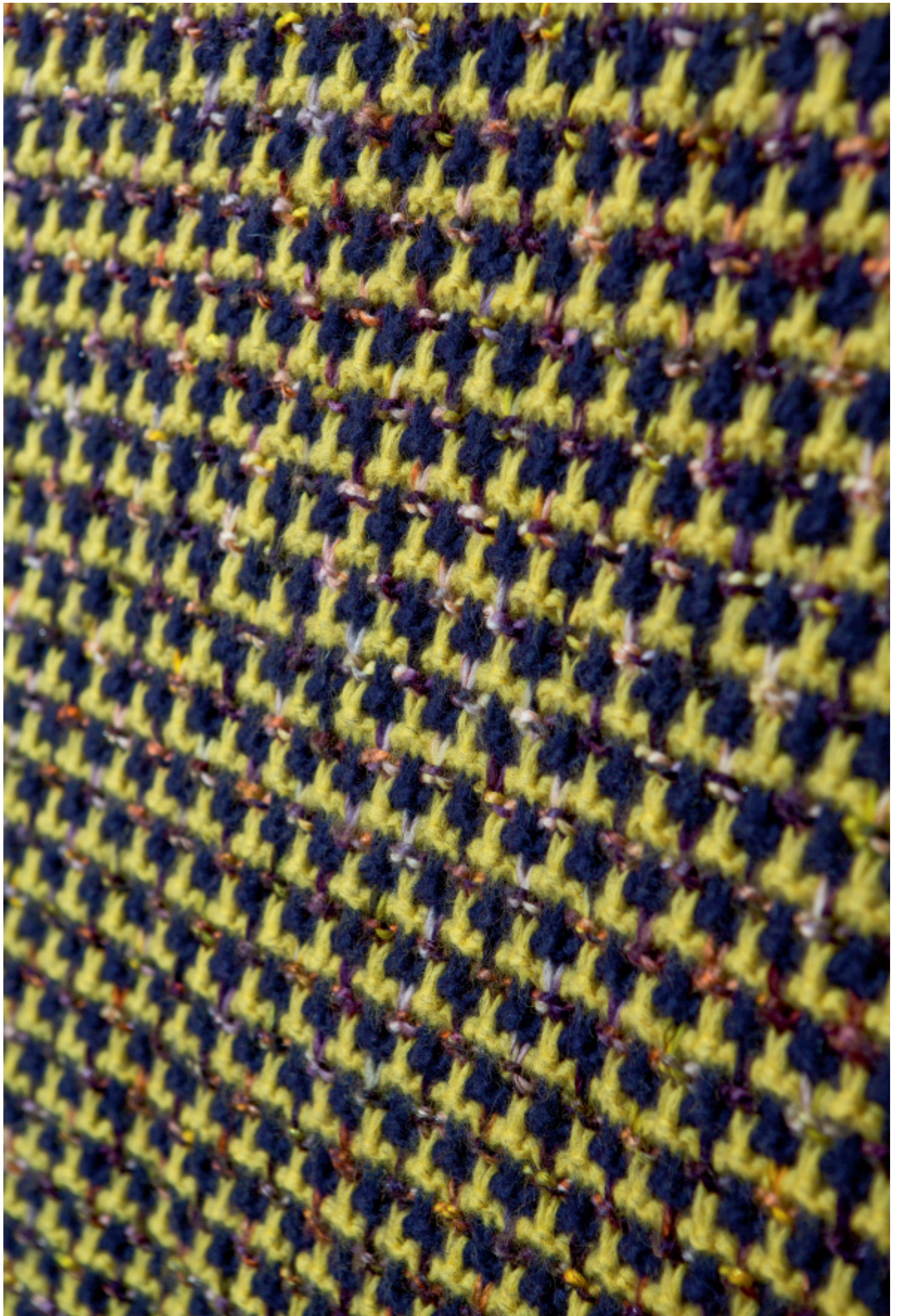


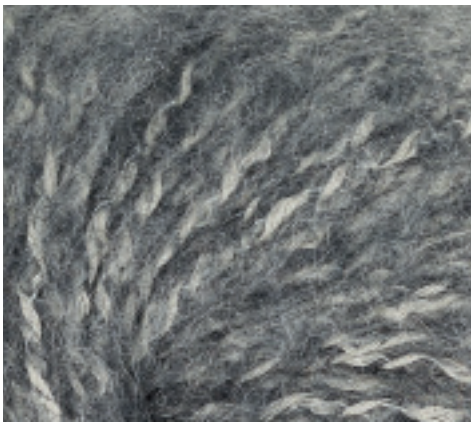












## ALICE

46% Baumwolle, 22% Polyamid, 18% Baby Alpaka, 14% Merino fine  
ca. 115m/50g, NN 5 - 5½

46% cotton, 22% nylon, 18% baby alpaca, 14% fine merino)  
ca. 115m/50g, NN 5 - 5½ (UK 6-5, US 8-9)



## NOVA

48% Merino fine, 32% Babykamel, 20% Polyamid  
ca. 180m/25g, NN 4½ - 5

48% fine merino, 32% baby camel, 20% nylon  
ca. 180m/25g, NN 4½ - 5 (UK 7-6, US 7-8)



## VIRGINIA

100% Schurwolle traceability  
ca. 50m/100g, NN 9 - 10

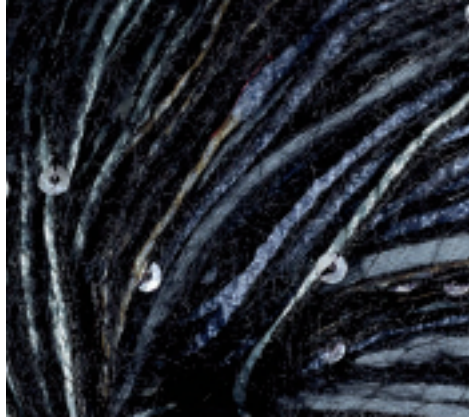
100% virgin wool traceability  
ca. 50m/100g, NN 9 - 10 (UK 00-000, US 13-15)



## CELINE

24% Baumwolle, 24% Polyester, 21% Viskose, 16% Mohair, 15% Polyamid  
ca. 140m/50g, NN 4 - 4½

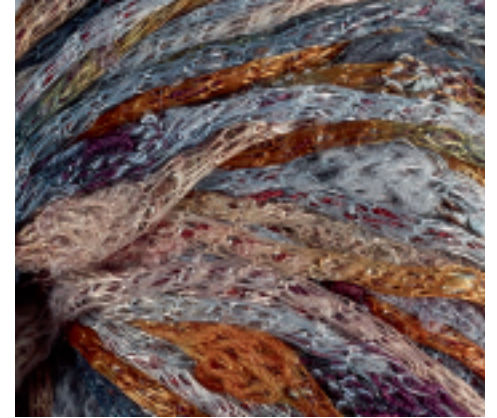
24% cotton, 24% polyester, 21% viscose, 16% mohair, 15% nylon  
ca. 140m/50g, NN 4 - 4½ (UK 8-7, US 6-7)



## CELINE LUXE

31% Polyamid, 25% Polyester, 18% Baumwolle, 16% Viskose, 10% Mohair  
ca. 100m/50g, NN 4½ - 5

31% nylon, 25% polyester, 18% cotton, 16% viscose, 10% mohair  
ca. 100m/50g, NN 4½ - 5 (UK 7-6, US 7-8)



## EMMA

32% Polyamid, 26% Wolle, 25% Polyacryl, 10% Baumwolle, 7% Viskose  
ca. 82m/50g, NN 5 - 5½

32% nylon, 26% wool, 25% acrylic, 10% cotton, 7% viscose  
ca. 82m/50g, NN 5 - 5½ (UK 6-5, US 8-9)



## ROYAL ALPACA

100% Royal Alpaka  
ca. 288m/50g, NN 2½ - 3

100% royal alpaca  
ca. 288m/50g, NN 2½ - 3 (UK 12-11, US 2-3)



## MOSSO

70% Schurwolle, 20% Polyamid, 10% Polyacryl  
ca. 200m/100g, NN 4½ - 5

70% virgin wool, 20% nylon, 10% acrylic  
ca. 200m/100g, NN 4½ - 5 (UK 7-6, US 7-8)



## PAJAZZO

66% Merino fine, 20% Polyamid, 14% Polyacryl  
ca. 50m/50g, NN 5½ - 6

66% fine merino, 20% nylon, 14% acrylic  
ca. 50m/50g, NN 5½ - 6 (UK 5-4, US 9-10)



## VIRGINIA FLAMÉ

100% Schurwolle traceability  
ca. 80m/100g, NN 9 - 10

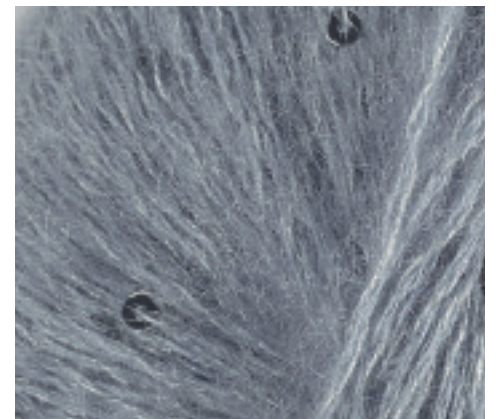
100% virgin wool traceability  
ca. 50m/100g, NN 9 - 10 (UK 00-000, US 13-15)



## MILLE COLORI SUPERKIDS

75% Superkid-Mohair, 5% Merino extrafine, 20% Polyamid  
ca. 175m/25g, NN 3 - 3½

75% superkid mohair, 5% extrafine merino, 20% nylon  
ca. 175m/25g, NN 3 - 3½ (UK 11-10, US 3-4)



## MOHAIR LUXE PAILETTES

41% Superkid-Mohair, 20% Seide, 37% Wolle, 2% Polyester  
ca. 145m/25g, NN 3 - 3½

41% superkid mohair, 20% silk, 37% wool, 2% polyester  
ca. 145m/25g, NN 3 - 3½ (UK 11-10, US 3-4)

LANG  
YARN S

